

COLLIER MANOR
PLAT BOOK 34, Page 33 Broward County Rec.

"COLLIER MANOR-
First Addition"
SEC. 24, TWP. 48 S., RGE. 42 E.
SEC. 19, TWP. 48 S., RGE. 43 E.
BROWARD COUNTY-FLORIDA

SCALE IN FEET 1" = 100'
J. W. McLAUGHLIN - CIVIL ENGINEER
FORT LAUDERDALE - FLORIDA
SEPTEMBER 1954

DEDICATION

STATE OF FLORIDA }
COUNTY OF BROWARD }
KNOW ALL MEN BY THESE PRESENTS: That GEORGE J. COLLIER, INC., a FLORIDA CORPORATION, owner of the lands shown and included on this PLAT, has caused said lands to be subdivided and platted as hereon shown; said subdivision to be known as "COLLIER MANOR - FIRST ADDITION". All STREETS, AVENUES, COURTS and PUBLIC WAYS shown on said PLAT are hereby dedicated to the perpetual use of the PUBLIC. All previous PLATS of said lands are hereby voided, cancelled and superseded by this PLAT.
IN WITNESS WHEREOF: GEORGE J. COLLIER, INC., has caused this DEDICATION to be signed in its name by its PRESIDENT and SECRETARY, this 29th day of SEPTEMBER, 1954.
WITNESSES:
Margaret A. Knapp
R. W. Doheen
BY: George J. Collier, Inc. PRESIDENT
BY: Robert J. Doheen SECRETARY

ACKNOWLEDGEMENT

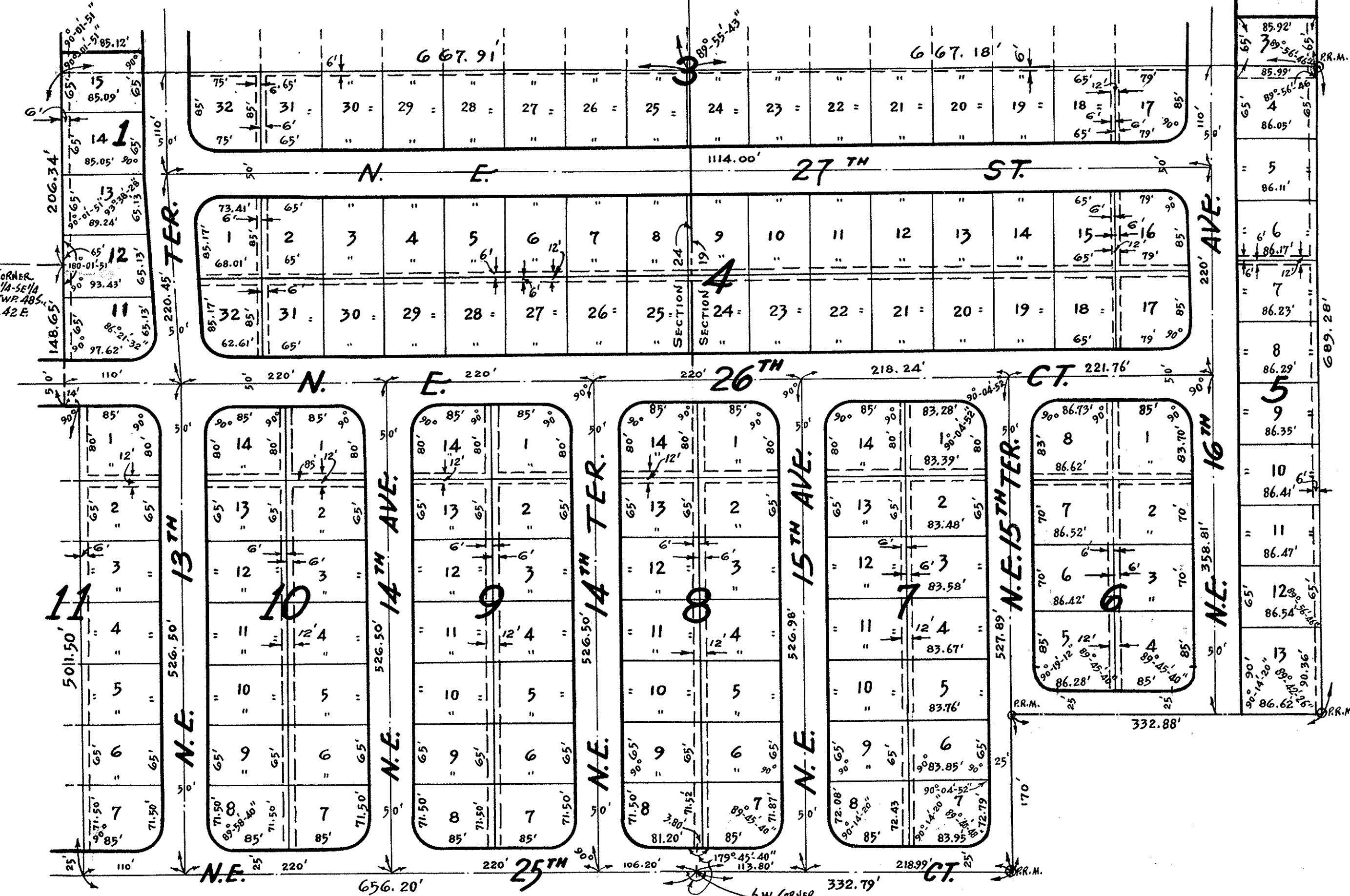
STATE OF FLORIDA }
COUNTY OF BROWARD }
I HEREBY CERTIFY: That on this day personally appeared before me, an Officer duly authorized to administer Oaths and take Acknowledgements, GEORGE J. COLLIER, INC. and LESTER J. PERLE, President and Secretary of GEORGE J. COLLIER, INC., and that they executed the foregoing DEDICATION as such Officers of said CORPORATION.
WITNESS: My Hand and Official Seal at FORT LAUDERDALE, BROWARD COUNTY, FLORIDA, this 29th day of Sept. 1954.
J. W. McLaughlin
NOTARY PUBLIC - STATE OF FLORIDA
My Commission Expires: Feb. 16, 1955

CIRCUIT COURT CLERK'S CERTIFICATE

STATE OF FLORIDA }
COUNTY OF BROWARD }
I HEREBY CERTIFY: That this PLAT complies with the provisions of "AN ACT TO REGULATE THE MAKING OF SURVEYS AND FILING FOR RECORD OF MAPS AND PLATS IN THE STATE OF FLORIDA", approved by the Governor, chm. 11th 1925.
FRANK H. MARKS
CLERK OF THE CIRCUIT COURT
BY: Madeline Taskhush DEPUTY CLERK
This instrument filed for RECORD this 8 day of November, 1954, and RECORDED in Book 35, of PLATS, at PAGE 28, RECORD VERIFIED.

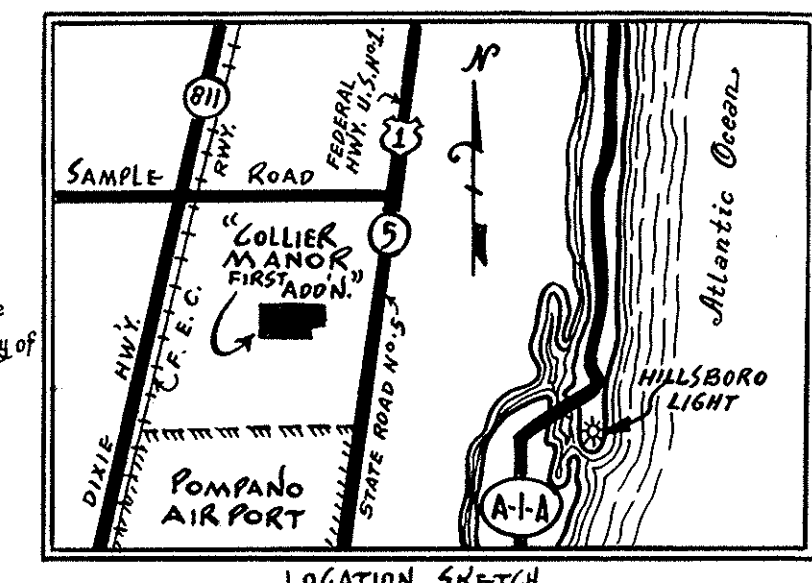
ENGINEER'S
CERTIFICATE

STATE OF FLORIDA }
COUNTY OF BROWARD }
I HEREBY CERTIFY: That this PLAT of "COLLIER MANOR - FIRST ADDITION" is a true and correct REPRESENTATION of a SURVEY made by me, and that PERMANENT REFERENCE MONUMENTS have been set as indicated. Dated at FORT LAUDERDALE, FLORIDA, this 28th day of September, 1954.
J. W. McLaughlin
REGISTERED ENGINEER, No. 1763 REGISTERED LAND SURVEYOR, No. 1675
STATE OF FLORIDA



DESCRIPTION

ALL OF TRACT "A" BLOCK 5 AND ALL OF TRACT "B" BLOCK 1, OF "COLLIER MANOR," A SUBDIVISION FILED IN PLAT BOOK 34, AT PAGE 45, OF THE PUBLIC RECORDS OF BROWARD COUNTY, FLORIDA, ALSO,
That portion of the E 1/2 of the E 1/2 of the SE 1/4 of SECTION 24, TWP. 48 S., RGE. 42 E., and the W 1/2 of the W 1/2 of the SW 1/4 of SECTION 19, TWP. 48 S., RGE. 43 E., BROWARD COUNTY, FLORIDA, described as follows:
Beginning at a point on the WEST boundary of said SECTION 19, which is 1094.42 feet South of the WEST 1/4 CORNER of said SECTION 19; thence EAST along the South boundary of said "COLLIER MANOR," making an angle in the Northeast quadrant of 89° 55' 43", a distance of 667.18 feet to a point on the EAST boundary of the said W 1/2 of the W 1/2 of the SW 1/4 of the SW 1/4 of the SW 1/4 of SECTION 19; thence WEST along the said EAST boundary of the said W 1/2 of the W 1/2 of the SW 1/4 of the SW 1/4 of the SW 1/4 of SECTION 19, a distance of 689.28 feet thence WEST along a line 170 feet North of and parallel to the SOUTH boundary of the said NW 1/4 of the SW 1/4 of the SW 1/4 of SECTION 19, a distance of 332.88 feet; thence South along the EAST line of the WEST 1/2 of the NW 1/4 of the SW 1/4 of the SW 1/4 of SECTION 19, a distance of 170 feet to the South line of the NW 1/4 of the SW 1/4 of the SW 1/4 of SECTION 19; thence WEST along said South line a distance of 332.79 feet to the SW corner of said NW 1/4 of the SW 1/4 of the SW 1/4 of SECTION 19; thence North along the NE 1/4 of the SE 1/4 of said SECTION 24, making an included angle of 180° 14' 20", a distance of 656.20 feet; thence North, making a right angle, a distance of 501.50 feet; thence WEST, making a right angle, a distance of 14.0 feet; thence NORTH, making a right angle, a distance of 148.65 feet to the Northwest corner of the NE 1/4 of the SE 1/4 of said SECTION 24; thence continuing North along the WEST boundary of the SE 1/4 of the NE 1/4 of said SECTION 24, making an included angle of 180° 01' 51", a distance of 206.34 feet to the Southwest corner of said TRACT "B," BLOCK 1; thence EAST along the South boundary of said "COLLIER MANOR," a distance of 667.91 feet to the POINT OF BEGINNING.



NOTES

INDICATES PERMANENT REFERENCE MONUMENTS.
ALL RADII ARE 25' UNLESS OTHERWISE NOTED.
DISTANCES AT BLOCK CORNERS ARE SHOWN TO TANGENT INTERSECTIONS UNLESS OTHERWISE NOTED.
UTILITY EASEMENTS INDICATED THIS:
1 1/2' 12' 6'

COUNTY ENGINEER'S SIGNATURE

APPROVED FOR RECORD:
COUNTY ENGINEER

MORTGAGE HOLDERS

AS OWNERS AND HOLDERS OF A MORTGAGE ON A PORTION OF THE ABOVE DESCRIBED PROPERTY, WE HEREBY APPROVE THIS PLAT THIS 21st day of October, 1954.
TRUSTEES OF FORTMOUTH ALLIANCE BY: John J. Marshall

MORTGAGE HOLDERS

AS OWNERS AND HOLDERS OF A MORTGAGE ON A PORTION OF THE ABOVE DESCRIBED PROPERTY, WE HEREBY APPROVE THIS PLAT THIS 4th day of October, 1954.
TRUSTEES OF FORTMOUTH ALLIANCE BY: John J. Marshall

